

PYROSENSE REPLACEMENT NOTES

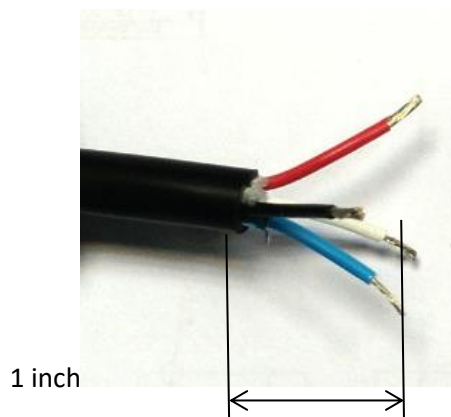
1. Received unit.



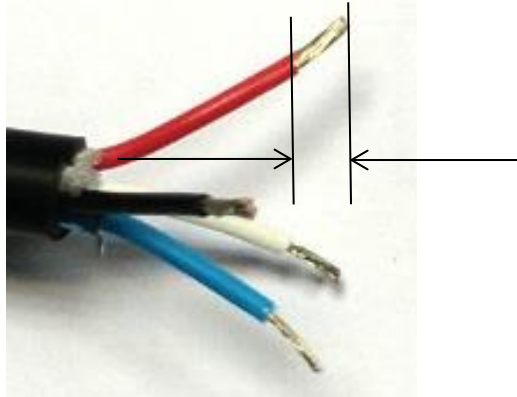
2. Unscrew the far side of the connector.



3. Cut the cable of the installed PYROSENSE that should be replaced near the PYROSENSE (4 inch from the cable opening of the PYROSENSE). Remove the PYROSENSE from the mounting bracket.
4. Place the new PYROSENSE on the mounting bracket.
5. Hold the black cable coming from the PYROBOX (previously connected to the old PYROSENSE) and remove the insulation about 1 inch (20 mm).



6. Remove the isolation from each wire for 5mm.

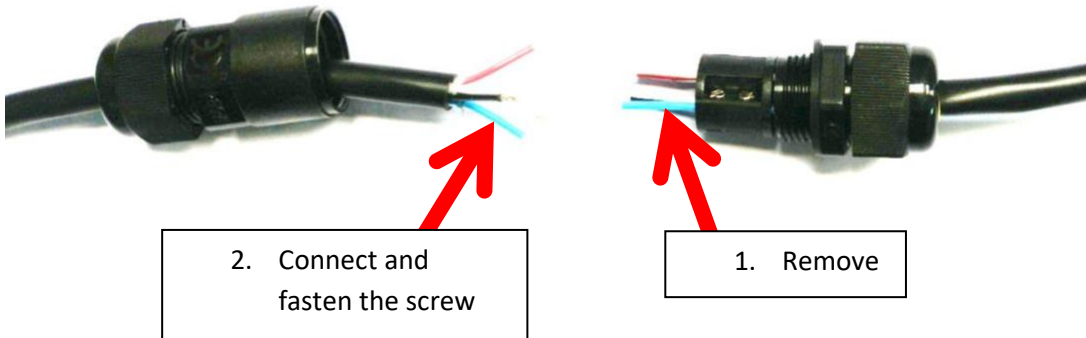


7. Place the removed side of the connector (2 components) on the cable.

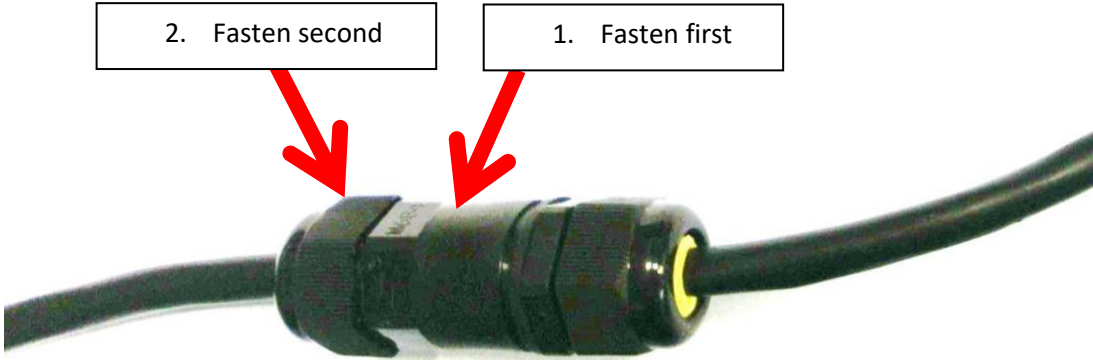


Leave the cap loosed.

8. Unscrew the short wires (4 different colors) from the received PYROSENSE and replace them with the same color wire from the existing cable. Do it wire-by-wire using a screwdriver.



9. Screw the free side of the connector on and fasten it. Use a wrench. Then fasten the cap.



10. Final expected result

