

ITS-CMK-319

Standing Seam Metal Roof Cable Clip



ITS-CMK-319 Uses:

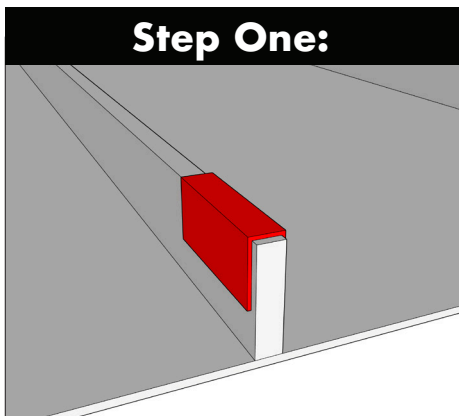
Use the ITS-CMK-319 roof clip to install heat cable on standard standing seam metal roofs. The ITS-CMK-319 is designed to fit over most common standing seams to provide a strong attachment point for the installation of heat cable on standing seam metal roofs. Verify the width of your standing seams to determine if the ITS-CMK-319 will fit properly before installation. The ITS-CMK-319 will normally fit standing seams between 3/16" to 3/8".

Installation:

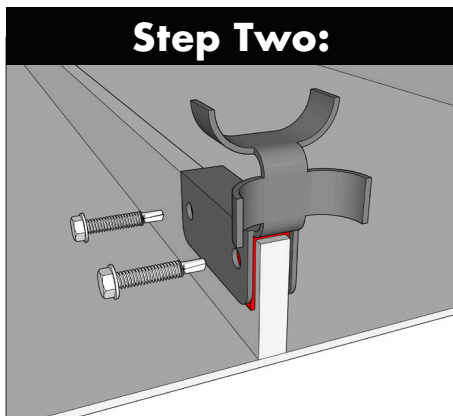
TOOLS: You will need a cordless drill and a standard 5/16" hex head driver bit. You may choose to use a pliers to clamp the 'cradle' of the ITS-CMK-319 onto the heat cable but pinching with your fingers typically works fine.

ITS-CMK-319 clips come with butyl tape pads that are installed between the clips and the metal roof surface. Before installing the clips determine your exact cable installation pattern (refer to the heat cable manufacturer's recommendations). Once the installation pattern is determined, clean the spots where the butyl pads will be installed using a cotton rag dampened with common isopropyl alcohol (rubbing alcohol).

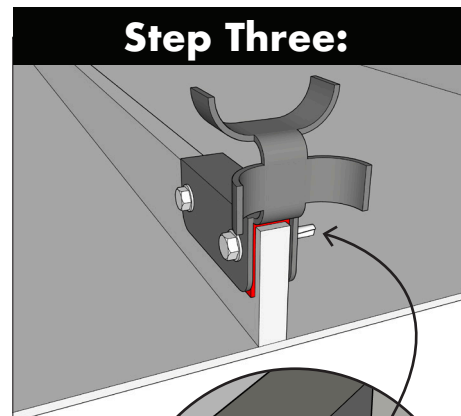
Step One:



Step Two:



Step Three:



Step One: Peel the backing off both sides of the butyl pad and stick it onto the surface **EXACTLY** where you intend to install the ITS-CMK-319.

Step Two: Seat the clip on the butyl pad. If the opening of the ITS-CMK-319 is wider than the standing seam it is okay. This will not affect the integrity of the clip strength.

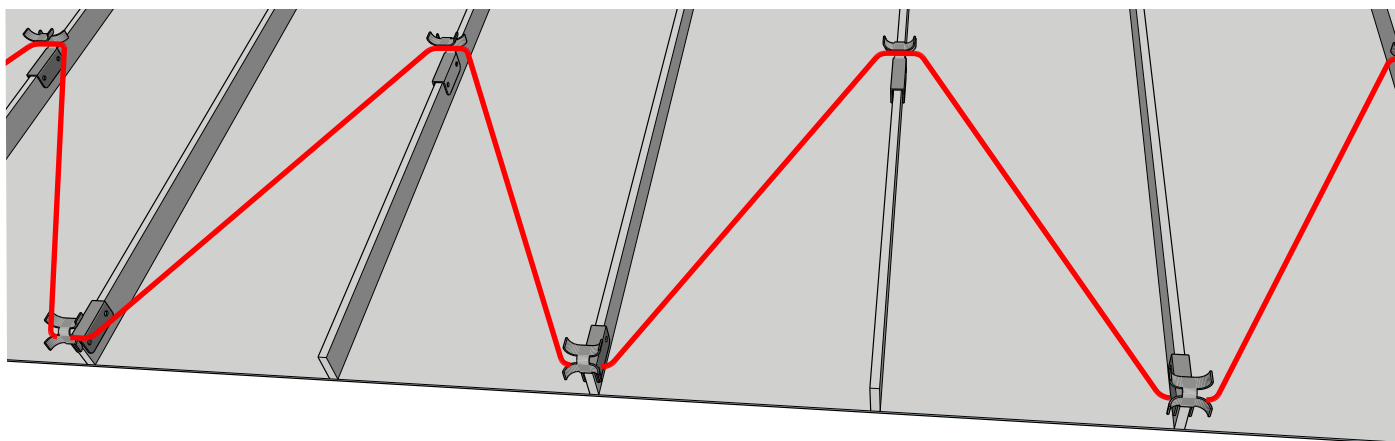
Step Three: Use two self-tapping sheet metal screws (included) to secure each ITS-CMK-319 in position by driving the screws through the holes. Do not over-tighten. You can use a drill bit to create pilot holes for the mounting screws if you find the screws are difficult to install. Note that the screws are intended to push through the clip and show on the other side. The threads of the screws **WILL NOT** touch the clip holes on either side of the clip. Thread contact with the clip holes is **NOT** required to achieve clip attachment.

CABLE INSTALLATION: After the ITS-CMK-319 is secured, lay the heat cable into the cradle area of the clip and use your fingers to pinch the top half of the cradle down onto the cable. A pliers can also be used for the pinching process.

ITS-CMK-319

Standing Seam Metal Roof Cable Clip

Installation Example



Heat Cable:

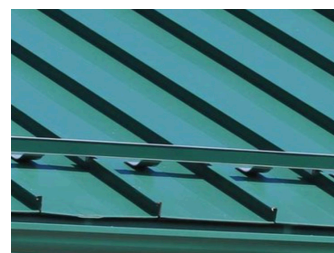
ITS-CMK-319 roof clips work for the installation of both self-regulating and constant wattage heat cable on a number of different standing seam metal roofing panels. Always follow the heat cable manufacturers installation recommendations to determine the tracing pattern. The height and width of your heat cable pattern will be dictated by the type of roof system you have and the heat cable manufacturers installation manual.

Snow & Ice:

We strongly recommend that a snow retention system be installed above your heat cable system (examples, right). Heat cables mounted with any type of roof clip can be damaged by sliding snow and ice. ITS-CMK-319 will not arrest sliding snow or ice and may possibly be damaged by the force of snow and ice sliding off the roof system. The ITS-CMK-319 warranty will not be honored on roofs without snow retention systems for this reason.



Snow Guards



Snow Fence

Considerations:

The ITS-CMK-319 can be installed at 35°F or warmer on clean, dry surfaces. The butyl tape will seal around the mounting screws immediately, creating a water-resistant connection. Note that the width of the ITS-CMK-319 will not perfectly match that of all standing seam widths and profiles (see figure 1, right). The clip will still perform well regardless. **WARNING:** Because the ITS-CMK-319 use screws to mount to the roof system, you are responsible for any issues relating to the warranty of said roof system before installation. The ITS-CMK-319 have a two year warranty against failure relating to manufacturing defects.

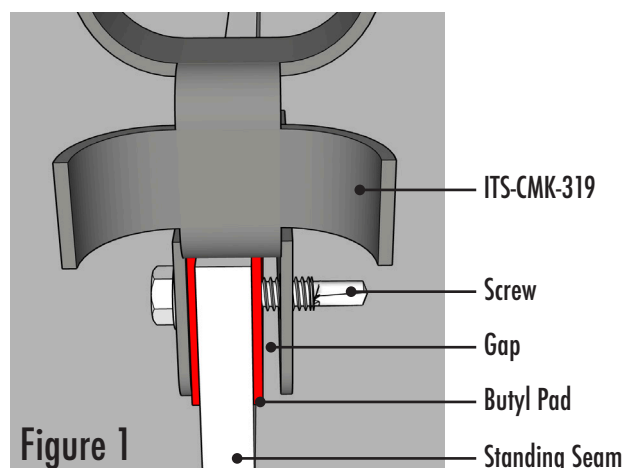


Figure 1