



Features and Benefits

- ÿ 180 frame motor is much stronger than 1.5HP motors
- ÿ 126 lb empty weight gives more down pressure than other machines (100 lb. vs 126 lbs).
- ÿ LESS amp draw and current usage, 9 amps vs. about 14
- ÿ Ergonomic Upper Handle Lock - no bending
- ÿ Ergonomic Trigger Spraying via normal handles - no reaching for a button
- ÿ Low 65 decibel operation - No odor cleaning, very quiet, dry in 15 minutes

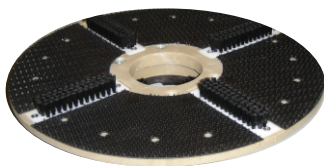
Unique circular spray pattern provides complete coverage without wetting walls, etc.

- ÿ Non-marking wheels
- ÿ Complete chrome covers
- ÿ UL/CUL Approved

Thumb operated safety switch

Dual steel operating and spraying triggers for left or right hand operation

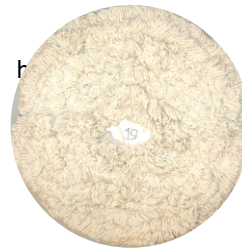
Variable angle handle adjustment fits operator's height



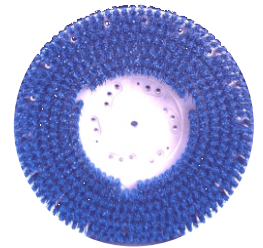
Brush-n-Bonnet Pad Driver
19" pad driver with riser for low-moisture cleaning with Camel 17" Floor Machine. **#137199**



19" Slotted Bonnet Cleaning Pad
For Brush-n-Bonnet Pad Driver. 4 per case. **#137399**



19" Wiping Bonnet Pad
Low-profile, 100% cotton looped pad loosens and carries away released soil. 6 per case. **#136599**



17" Clean Grit Rotary Grout Brush w/NP9200 clutch plate. Softer 180 Grit multi-level bristles give superior scrubbing. **#816515**