

SW-6

INNOVATION OF CLEANING

Maintenance Nat Inc.

9695, rue Clément, Lasalle (Québec) H8R 4B4

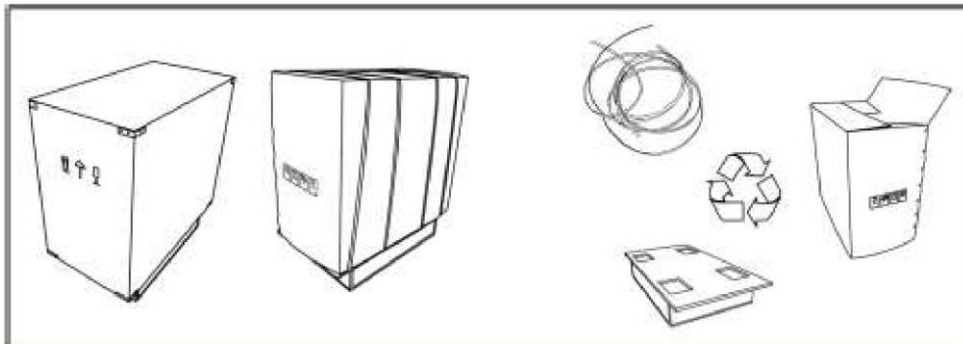
Cell. (418) 805 9511 Tél. 514-

903-6628 Ext. 400

scommercial@maintenancenat.ca

1 Open the packing

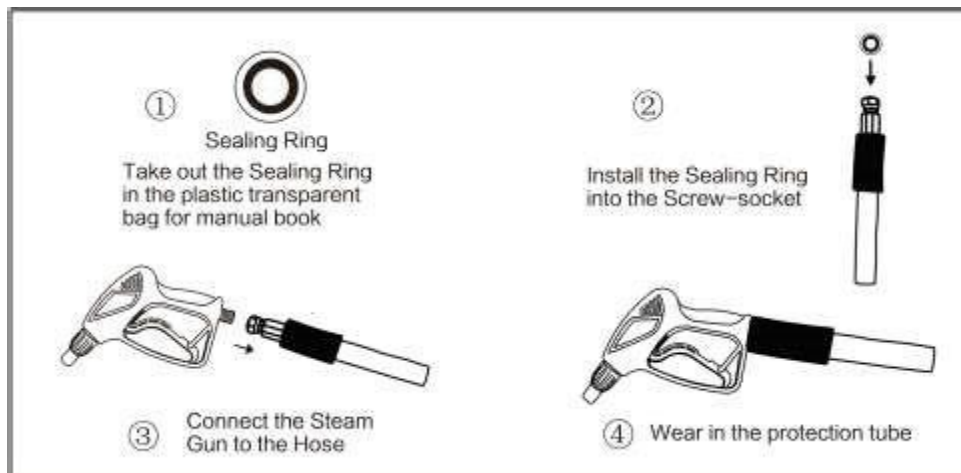
- If you found any damage of the machine while you open the package, please contact the Service providers
- Packing materials should be kept well or recycled



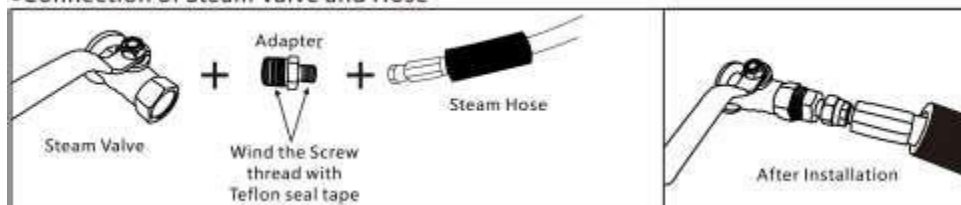
2.Installation

2.1 Connection of the steam guns

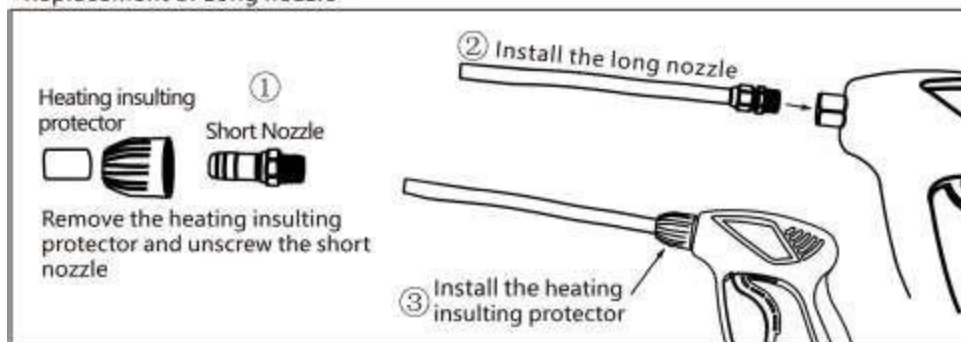
- Connect the steam pipe and the steam gun



•Connection of Steam Valve and Hose

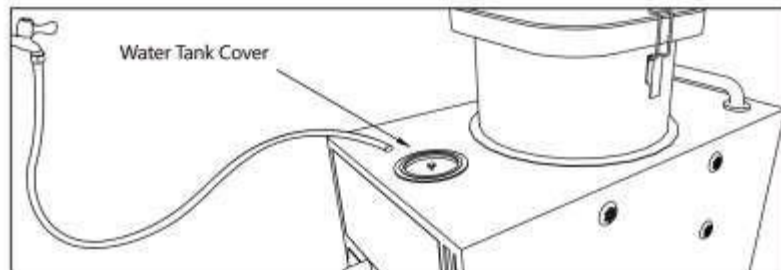


•Replacement of Long nozzle



2.2 Add Water

- Open the tank cover, you can add water by hand

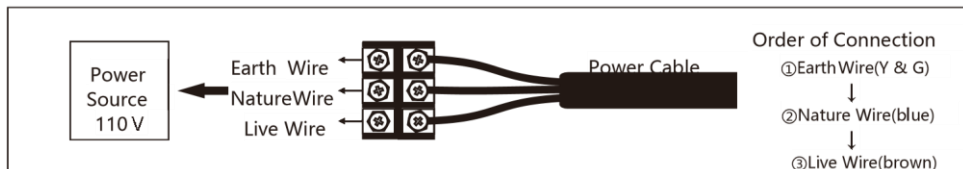


⚠ Machine should be put on plat form!

⚠ Never use pure water!

2.3 Power connection

- Connection for 100-120V electricity system machines

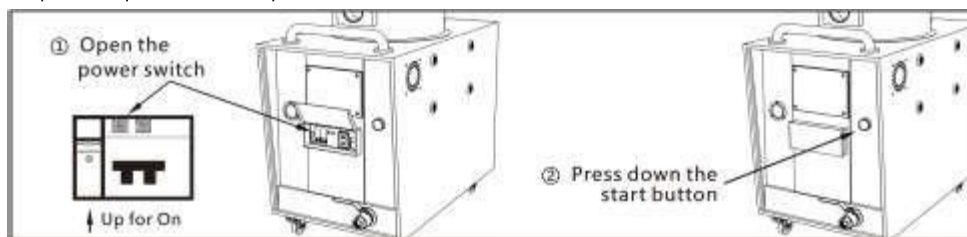


⚠ Do not connect the earth wire and nature wire together or discordantly connect them

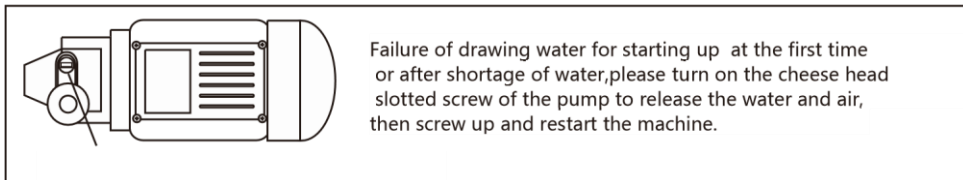
⚠ Machine should be connected to power supply with safe ground wire

2.4 Start machine

- Open the power switch, press down the start button

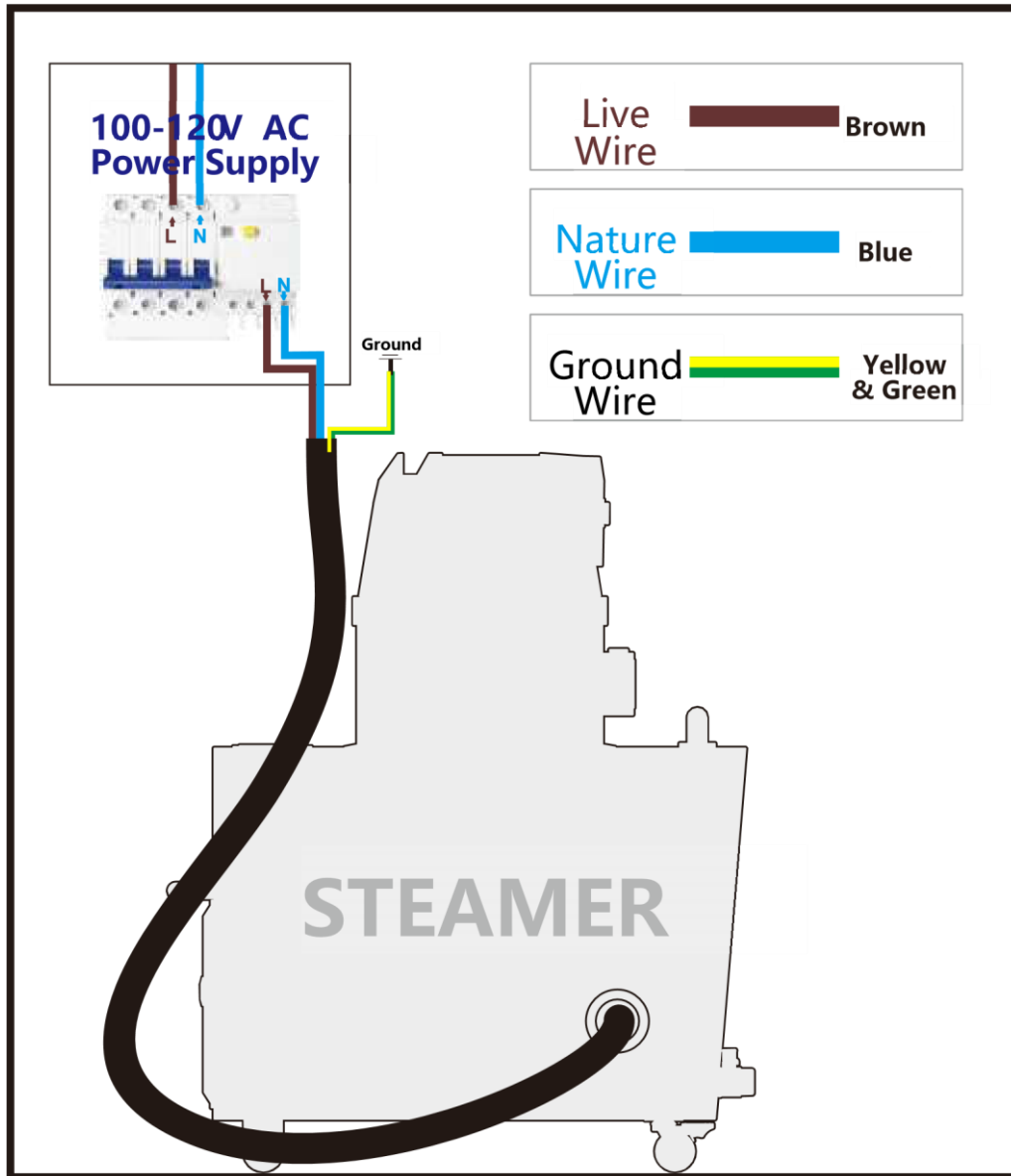


2.5 Pump adjustment in some cases



Cheese Head Slotted Screw

100-120V AC POWER CONNECTION

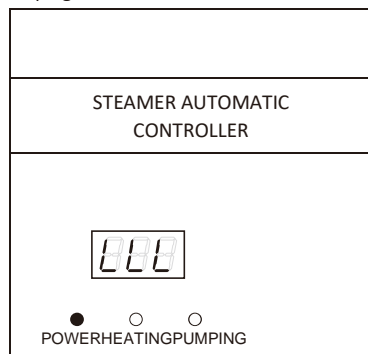


2.Process of running

- After pressing the start button, the machine will work automatically.

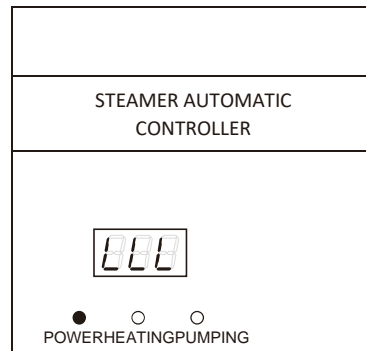
It has several display states. The user who knows the Process of running very well is helpful to the 

a. Pumping:



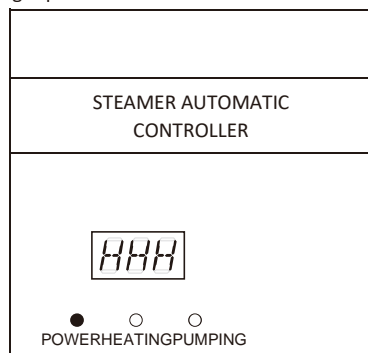
When first start, it would shows LLL, power light (green) would on, pumping light (red) would flash and the pump would pump at the same time

b. Heating:



After the pumping light off, the pump would stop pump after 3 seconds later, the heating light (yellow) would on, and the machine now is heating, it would still show LLL, the state would last about 6-10 minutes

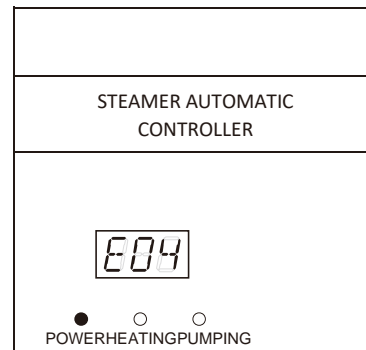
c. High pressure:



After heating, the heating light would off, and the machine would stop heating, HHH means

it is ready for use

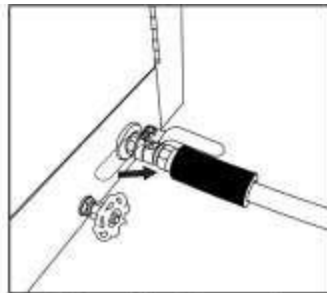
d. Lack of water:



E04 means the water tank is out of water, when the E04 shows, the machine would stop heating, and there would be a alert sound untill you add water to the water tank and reboot the machine

maintenance of the machine.

3. Machine operation



① Open the steam valve

3.1 Using of steam



② Pull the trigger for spraying



Steam
Spray out the water inside the hose for few

seconds to get dry steam before interior or engine cleaning. Do not spray at human or animals!

Choose different tools such as towel, brush, chemical, etc. to assist steam wash according to different materials, parts and dirty condition of the object being washed to faster the cleaning process and lower the power consumption.

3.2 Barometer indication



Steam working pressure is between 0.5Mpa and 0.6Mpa (that is 5-6bar)

When the pressure reach 0.5Mpa, the machine will automatically start generating steam until it reach 0.6Mpa

3.3 Shutdown of the machine

When finish using of the steam machine, please close it down in proper order of:

1 → 2 → 3 → 4

Steam Valve

Start Button

Power Switch

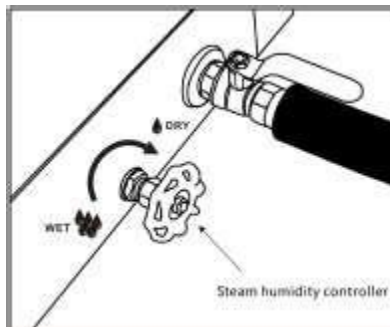
Cut down the power supply



To protect the hose for longer time use, please spray out the residual steam in the hose by pulling trigger.

3.4 Steam Humidity Control

This steamer carry the function of steam humidity adjustment by rotating the steam humidity controller. For stubborn stains like pitch, resin, etc. Dry steam is required for better cleaning performance; while for large areas of mud or oil, wet steam is preferred.



As shown in above indication, clockwise rotate the screw like humidity ontroller in the direction of arrows for dryer steam; while rotate in the opposite, wetter steam is generated.

3.5 Force drainage

Drainage out all of the water in the machine in case of icing up(in cold area) or long time idleness.

Steps:

- (1)Stop adding water to water tank.
- (2)Do the drainage process firstly.
- (3)When machine display board show E04, keep pressing the forced drainage button to force the pump working until there is no water out from the drainage valve.

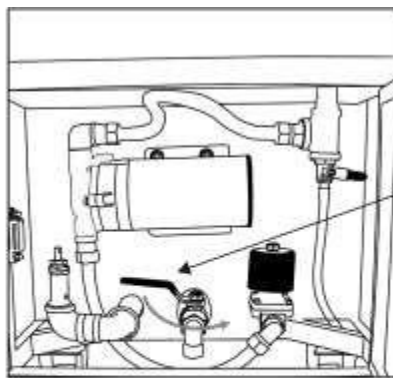
4.Maintenance

4.1 Drainage and antiscale

To prevent the scale from blocking the tube, please drain off the water inside the steam generator each day, at least 3 days a time, please follow the below instructions:



Open the drainage valve in the back of the machine under the condition of 0.2 Mpa steam pressure which can be helpful for pushing the water and scale deposit out of the machine



Quick and Completely open the Drainage Valve



Be aware of the hot temperature when draining off water to prevent from being scalded!



Please thoroughly open the drainage valve quickly, so as to guarantee the sudden powerful steam pressure to drive the dirty out from the steam generator. (Please do not open the valve half or slowly)



To stop using the machine for a period of time or for purpose of anti-icing in winter, after draining out the hot water inside steam generator, please press the forced drainage button to start the pump and drain out all the water in the water tank and tube.



You can connect a pipe to the Drainage Valve to drainage the water to the other where

4.2 Clean of steam generator

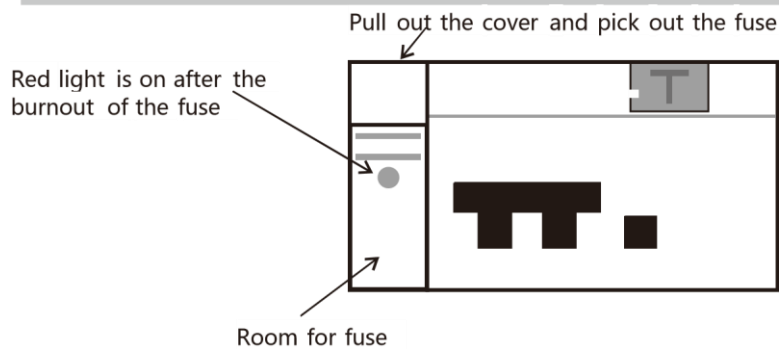
If there has generate some calcium deposit, please use disincrustant to clean it in the following steps:

- ① Discharge all the water and steam in the steam generator.
- ② Add the disincrustant into water tank, then start the machine, the pump will draw the liquid into the steam generator until it reach the setting level. ③ When the pump stop working, shut down the machine. Wait for 8 hours.
- ④ Turn on the steam valve and drainage valve to discharge all the liquid, then use clean water to clean the steam generator twice to make sure there is no disincrustant or deposit left inside.
- ⑤

4.3 Others

- ① Make sure the machine body and the display panel is clean.If there is dust or water on machine, please use a towel to clean and dry it.
- ② Do not splash water or other chemical onto the display panel or meter in case it generate short circuit or corrosion damage.
- ③ Make sure the inlet water is clean. Dirty water can generate blocking to tube and steam gun jet.
- ④ Hard water is easy to generate calcium, please avoid using to hard water.

4.4 Fuse changing



4.5 Solutions to common failures

| Failure description | | Reasons and Solutions |
|---------------------|-----------------------------------|---|
| E01 | Failure of water level sensor | Loose of the wire connections to the sensor or pool contact of the sensor needle to the water caused by scale |
| E02 | Water shortage in steam generator | Failure of pump or solenoid under high steam pressure, or inability in pumping enough water into the steam generator under high steam pressure. Repair or change the failure parts. |
| E03 | Break of steam generator assembly | Change the failure part |

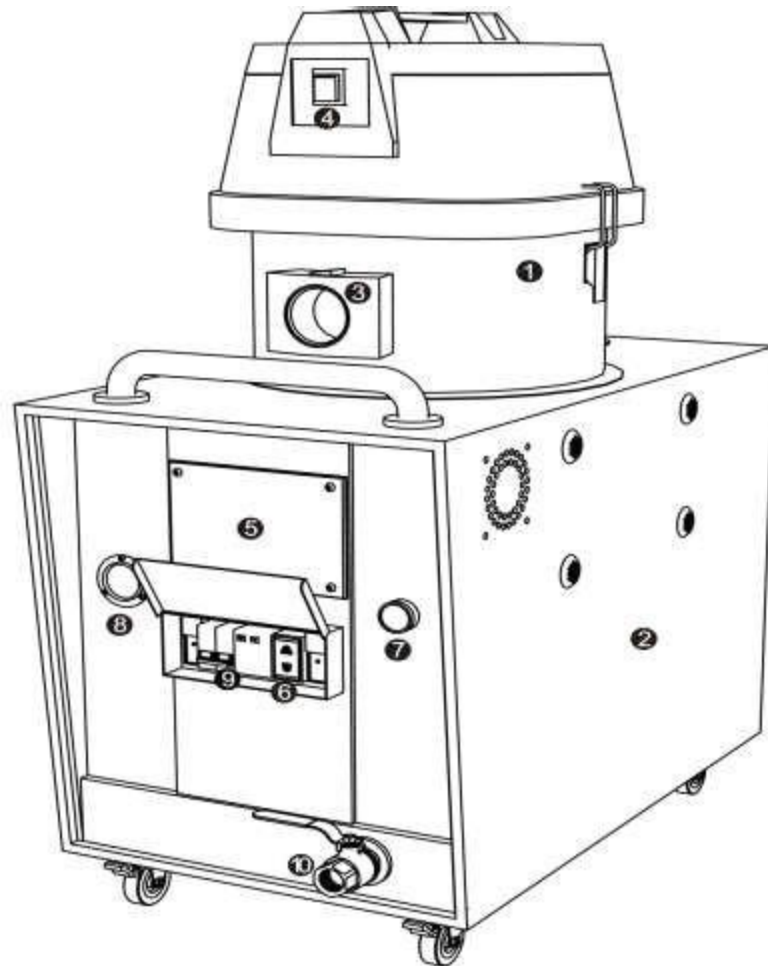
| | | |
|---|------------------------------|---|
| E04 | Water shortage in water tank | Refill water tank with water(E04 could also be generated by pure water, if so, please change to normal city water, or add some mineral substance into the pure water) |
| No display on display panel | | Could be generated by burnout of fuse, no power supply or failure of the PCB, etc. |
| Burnout of PCB fuse | | Check the power connection and whether the power supply system is normal |
| Tripping of the power switch, overheating on the wires | | 1. The rated current for the power supply system or the power supply switch is lower than required, please change the wires and power switch with rated current above 45A. 2. Leakage of electricity in steam generator assembly. Change it. |
| Heating failure under LLL | | 1. Check whether the contactor in the electricity box is normal for switch on and off. If abnormal, change the coil of the contactor. 2. Check the condition of the output of the ends of the relay, if abnormal, repair the PCB. |
| Hot water inside steam generator flowing backwards | | Check valve is blocked or broken, clean or change it. |
| Failure on option of water and pressure water(for series 2) | | Failure on steam solenoid or pressure water solenoid, change or repair it. |
| LPG model: No fire | | 1. Voltmeter reading is below 20V, charge the batteries. 2. Compare the gas pressure control valve with the one we sent to you. 3. Check whether there is any loose on the wire connection of the PCB. |

PS: When there is a problem that you are not sure how to deal with, please consult with the machines supplier

5. Parameter

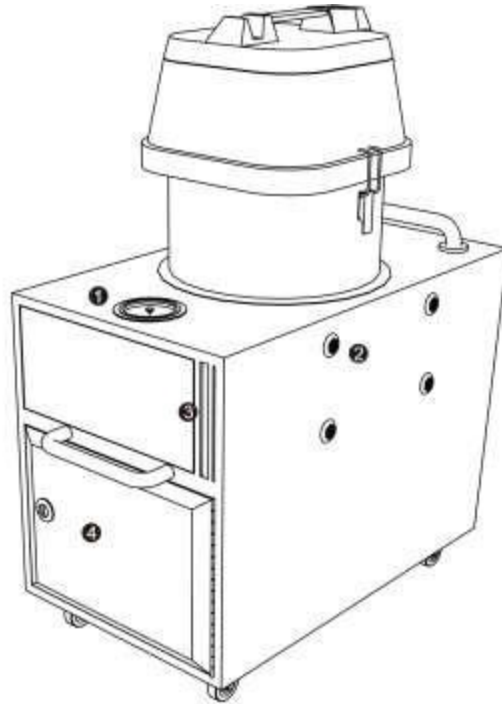
| Parameters | Power Source | Voltage | Rated Power | Water tank Capacity | Maximum Evaporation | Steam Pressure |
|----------------------|---------------------|------------------------|---------------------------|---------------------|---------------------|-----------------|
| Unit | — | V | Kw | L | kg/h | bar |
| Value Description | Electricity | AC 100~120 50/60 Hz | 2.4+1.2 | 10 | 6 | 6 |
| Parameters | Size | Steam Vacuum Function | Steam Humidity Adjustment | Max Temperature | Weight | Super Dry Steam |
| Unit | mm | — | — | °C | kg | — |
| Value Description | 762x432 x555+385 | Yes | Yes | 155 | 40 | No |

6.Sketch Map



- | | |
|-------------------------|-------------------------|
| ① Vacuum Cleaner | ⑥ Vacuum Power Socket |
| ② Steam Machine | ⑦ Steam Starting Button |
| ③ Vacuum Hose Connector | ⑧ Barometer |
| ④ Vacuum Start Button | ⑨ Power Switch |
| ⑤ Display Panel | ⑩ Steam Valve |

- ① Water Tank Cover
- ② Heat Emission
- ③ Water Level
- ④ Maintenance Room



Sketch Map for Maintenance Room

- ① Water Pump
- ② Solenoid Valve
- ③ Safety Valve
- ④ Drainage Valve

