



# Assembly Guide

## TIPS

To detach the parts from the board, press the anchor point with your thumb.  
 Always push with your thumb on the engraved side of the board, so the piece falls under the board.  
 You can easily locate the anchors points by looking at the back of the board.  
 Use PVA glue diluted with a little water. (3 parts adhesive, 1 part of water).  
 Use a small file to remove the anchor points' residues. You can also use a modeler's knife (handle it carefully to prevent injury).  
 Use a small brush to spread the diluted glue.



## Guide Cottage in Ruins

Make sure to form strait angles with the walls, so that no wall leans inward [especially D and E].  
 This would make it harder to assemble the interior walls.  
 Also, do not allow drying time between steps. This will allow you to adjust the parts if needed.

### Outside



Glue the part [C] on [A]'s side where there are only two anchors points



Whileholding the [C] wall towards you, glue the [D] wall to the left of [A] and [C]



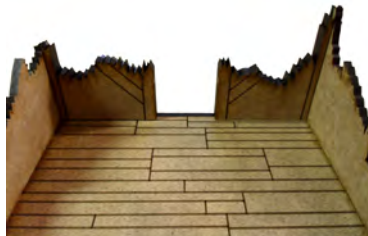
Maintaining the same position, glue the [E] wall to the right



Finally, the part [B] completes the outside walls.

### Inside

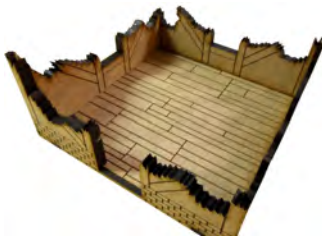
Parts should slide neatly leaving no space between them



Take the two parts [C1], glue them against both parts [C] while making sure they do not protrude into the door opening.



Glue [B1] against [B].



Glue [D1] against [D].



And finally, [E1] against [E].

### Debris



On the board, there are some parts representing broken beams. You can arrange them according to your imagination to add debris to your model