



# Assembly Guide

## TIPS

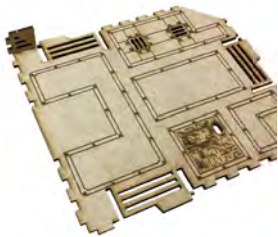
To detach the parts from the board, press the anchor point with your thumb.  
 Always push with your thumb on the engraved side of the board, so the piece falls under the board.  
 You can easily locate the anchors points by looking at the back of the board.  
 Use PVA glue diluted with a little water. (3 parts adhesive, 1 part of water).  
 Use a small file to remove the anchor points' residues. You can also use a modeler's knife (handle it carefully to prevent injury).  
 Use a small brush to spread the diluted glue.



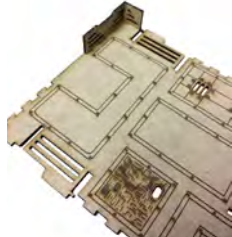
## Guide Square Platform

Before assembling this product, you should paint the parts.  
 Especially the feet, because the inside will become difficult to access once the assemblage is complete.

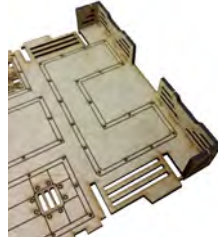
Take the part [J]. Glue the parts as shown on each photo



Part [B]



Part [C]



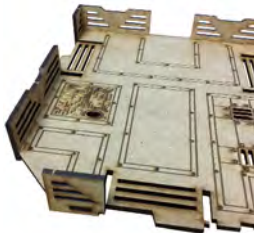
Parts [D] et [E]



Part [F]



Part [A]



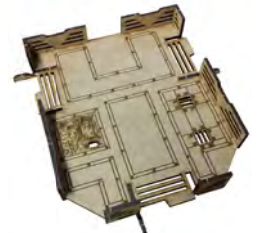
Part [G]



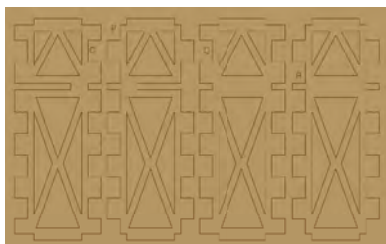
Part [H]



Then, insert the three parts [I] into the left sockets of each walkway entrance



## Assemblage of the corner pillars



Take a row of pillars [O], [P], [Q] and [R]



Glue [O] and [P] at 90° angle, making sure that the two large notches meet



Complete the pillar with parts [Q] and [R]



Close the top of the pillar with a part [S]



To finish, glue and center part [U]  
in the frame of the piece [S]  
(To prevent [U] from showing on the top of  
the pillar, apply the glue on the engraved side)



Glue [T] to the bottom of the pillar

**The central pillar is similar but it is important not to assemble the top part before gluing the pillar to the platform.**



Glue [K] and [L] on each side of [M], making  
sure that the notches are across from [M]



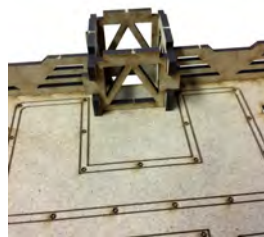
Glue [N1] to close the  
remaining side of the pillar



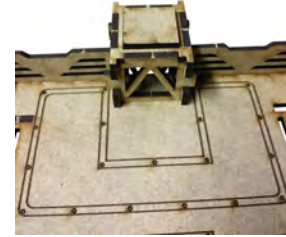
Glue [T] to the bottom of the pillar



Insert and glue the two "identical" pillar  
son each corner of the platform and glue  
the center pillar on the opposite side



Insert [N2] into the head  
of the center pillar



Close the center pillar using [S]  
and then part [U] on top of it