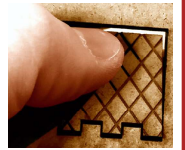




Assembly Guide

TIPS

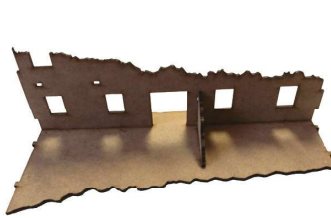
To detach the parts from the board, press the anchor point with your thumb.
 Always push with your thumb on the engraved side of the board, so the piece falls under the board.
 You can easily locate the anchors points by looking at the back of the board.
 Use PVA glue diluted with a little water. (3 parts adhesive, 1 part of water).
 Use a small file to remove the anchor points' residues. You can also use a modeler's knife (handle it carefully to prevent injury).
 Use a small brush to spread the diluted glue.



Urban warzone C - Guide



Insert [C8] into [5]



Assemble [C4] and [C5], you will need to tilt [C4] and then insert it on the anchors of [C8]



Add [C7] at the end



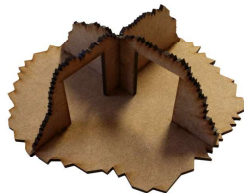
Insert [C9] into [C4]



Add [C6] to the other end while inserting it into [C9]



Insert [C3] into [C1], make sure that [C3] does not exceed [C1]



Insert [C2] into [C3] and [C1] making sure that it does not exceed [C1]



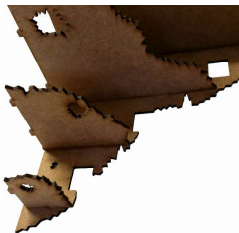
Join [C12] and [C10]



Insert [C13] into [C10]



Insert [C14] into [C10]



Insert [C15] into [C10]



Complete the assemblage with [C11]



You will find twenty parts [Z]. You must position one in each window.



The parts on the left represent planks or beams and the ones on the right represent pieces of broken concrete.

We recommend that you glue the concrete parts now, but keep the beams to paint them separately and add to the models at the end, especially if you choose to use a textured spray on the models.

