



Assembly Guide

TIPS

To detach the parts from the board, press the anchor point with your thumb. Always push with your thumb on the engraved side of the board, so the piece falls under the board. You can easily locate the anchors points by looking at the back of the board. Use PVA glue diluted with a little water. (3 parts adhesive, 1 part of water). Use a small file to remove the anchor points' residues. You can also use a modeler's knife (handle it carefully to prevent injury). Use a small brush to spread the diluted glue.



Guide Country House in ruinsy house in ruins



Take [I] and glue [G] at its intended location.



Take [H] and glue it next to [G].



Glue [D] followed by part [E].



Glue [F].



Glue [A].

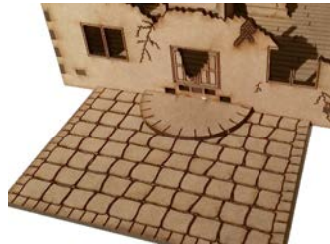


Glue [B].

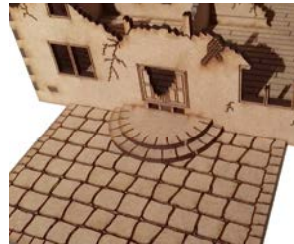


Finish the contour of the house using part [C].

Stairs



Insert [K] at the base of the double door wall and glue a part [L] into the corresponding holes under the door.



Add a part [M] over [L].



Complete the stairs using a part [N].



For the other set of stairs, add [J] in the matching holes under the single door.



Glue over the remaining part [L].



Glue the remaining part [M].



Glue the last [N] part on top as to finish the second set of stairs.

Cardboard

To remove the parts on Cardboard, it is recommended to cut the anchor points with a modeling knife in order to avoid tearing the parts. Place the part of cardboard against the matching part to make sure you have the right one, because some parts may look similar. Follow the order in which Cardboards are glued, as some of them are the same size as the interior walls and others are shorter so that they fit smoothly with the thickness of Cardboard and must be glued afterwards.



Cardboard [H] goes on part [H].



Cardboard [G] goes on part [G].



Cardboard [D] goes on part [D].



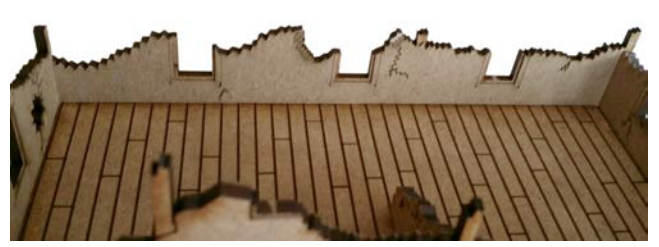
Cardboard [A] goes on part [A].



Cardboard [F] goes on part [F].



Cardboard [E] goes on part [E].



Cardboard [B] goes on part [B].



Cardboard [C] goes on part [C].

Exterior cardboard

For the exterior, each frame is composed of: the outlines of the windows, the doors or the edges of the walls. For example, frame [A] corresponds to wall [A]. Refer to the picture to position the parts in the right place. It should be obvious and we can only add a word of advice: position your parts once before gluing them, this will allow you to adjust your positioning adequately.



Frame [A] goes on wall [A].



Frame [B] goes on wall [B].



Frame [C] goes on wall [C].



Frame [D] goes on wall [D].



Frame [E] goes on wall [E].



Frame [F] goes on wall [F].