



# Assembly Guide

## TIPS

To detach the parts from the board, press the anchor point with your thumb. Always push with your thumb on the engraved side of the board, so the piece falls under the board. You can easily locate the anchors points by looking at the back of the board. Use PVA glue diluted with a little water. (3 parts adhesive, 1 part of water). Use a small file to remove the anchor points' residues. You can also use a modeler's knife (handle it carefully to prevent injury). Use a small brush to spread the diluted glue.



## Guide Norman house in ruins

### First Floor



Glue part [C] on the longest side of the floor [G], engravings facing outwards



Glue [D] to the right of part [C]



Glue [E] next to part [D]



Glue part [F] next to [E] as to form the inner corner. Put the door aside.



Glue [A] next to part [E]



Glue [B2] next to part [A]



Glue [B1] on the other end of part [C]

For the following items, engravings should face inwards to form inner walls. Follow these steps for a smooth assembly



Glue [D1] against the inside of [D] while matching the openings



Glue! [B1] against the inside of [B1]



Glue [C1] against [C] inside the house



Glue [B21] against [B2] inside the house



Glue [E1] against [E] inside the house



Glue [F1] against [F] inside the house



Using part [A1], complete the assemblage of the interior walls



Glue parts [H] and [H1] back to back



The assemblage of [H] and [H1] fits into the two holes in the floor, near the house's entrance. Make sure that the plain side is close to the wall [E1]

### Stairs



Glue the two parts [W] on each side of part [X]



Insert parts [Y] to form the steps, starting with the top one to maintain the same gap throughout the staircase.



Take both parts [V] and glue them on either side of the staircase. (Engravings should be visible)



Glue [Y1] on the top of the stairs. Make sure it does not exceed at the back



You can glue the stairs by aligning them with the wall's [H] plain edge. This step is not mandatory, we recommend to fix the stairs after you finish painting

### Second Floor



Glue [O] to part [K] lengthwise



Glue [L] to the right of part [K]



Glue [J] to the left of [K]



Glue [M] next to [L]



**(Second Floor Continued)**



Glue [N] next to [M] to form the corner



Glue [I] next to [N]



Glue [J] against [J]



Glue [L] against [L]



Glue [M] against [M]



Glue [K] against [K]



Glue [N] against [N]



Glue [I] against part [I]

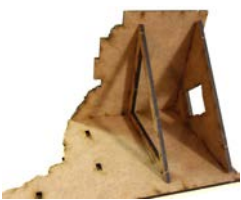
**Third Floor**



Insert part [S] into [T]



Insert part [R] into [T]



Insert part [U] onto parts [S] and [R] and against [T]



Insert part [R2] onto [T]



Insert part [R3] onto [T]

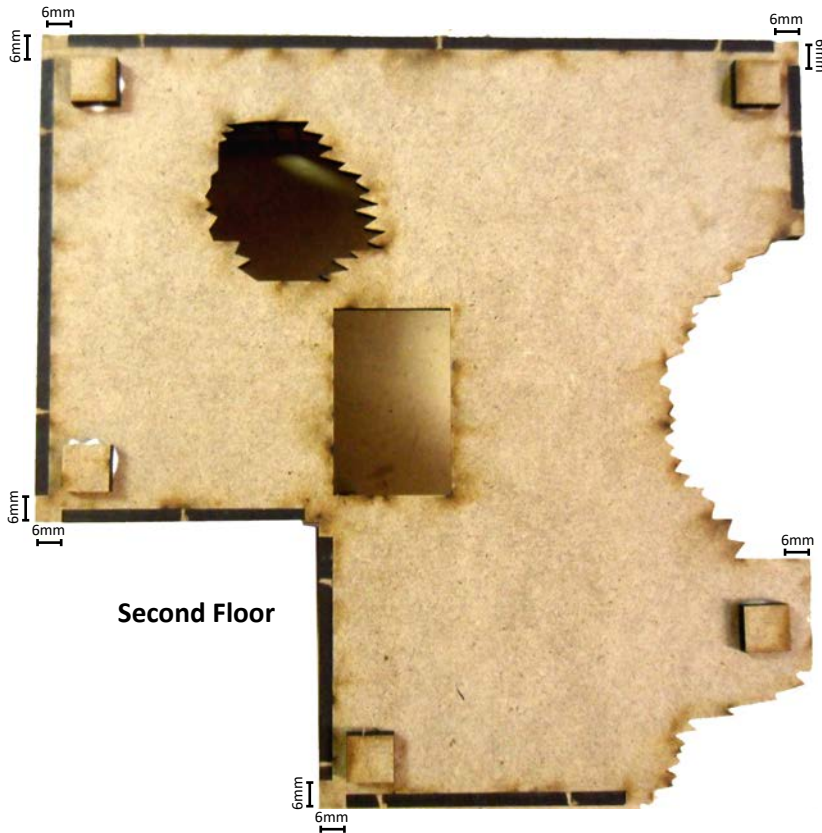


Insérez la pièce [S1] contre la pièce [S] à l'intérieur

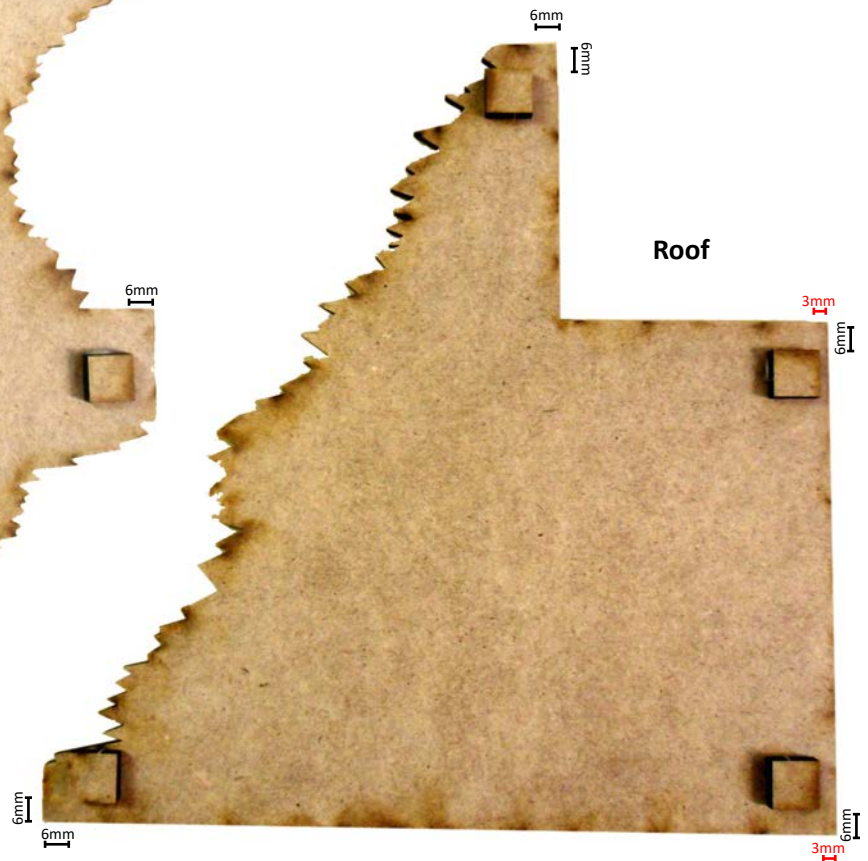
Glue parts [AA] near the corners' edges, under the floor of the second and third stories. Make sure they do not interfere when you overlay the floors.

Consider the double thickness of the inner walls. Leave enough space at the edge (6mm)

The spacing near the roof's tip, under part [S1] is only (3mm)



**Second Floor**



**Roof**

## Cardboard



Cut the anchors points using a modeler's knife to avoid damaging the parts when you detach them.

## Door (You can glue the door in its opening or let it rest on the floor)

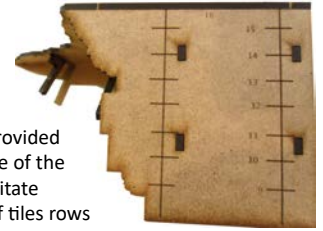


Glue part [19] on the door's plain side



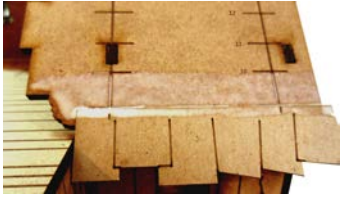
Glue two parts [18] on each side  
Insert [F1] door handle in the hollow on the side

## Roof



A scale is provided on each side of the roof to facilitate assembly of tiles rows

Position each part to match the vertical slots with the roof's horizontal lines. Align the parts right under the horizontal lines. It is important to apply some glue on top of the tiles before positioning the next row, as shown in the following photos. Start at the bottom of the roof.



### Small side

- 1<sup>st</sup> row #9
- 2<sup>nd</sup> row #10
- 3<sup>rd</sup> row #11
- 4<sup>th</sup> row #12
- 5<sup>th</sup> row #13
- 6<sup>th</sup> row #14
- 7<sup>th</sup> row #15
- 8<sup>th</sup> row #16



### Long side

- 1<sup>st</sup> row #1
- 2<sup>nd</sup> row #2
- 3<sup>rd</sup> row #3
- 4<sup>th</sup> row #4
- 5<sup>th</sup> row #5
- 6<sup>th</sup> row #6
- 7<sup>th</sup> row #7
- 8<sup>th</sup> row #8



Part [17] is in two parts. They stick together on the rooftop. Be sure to check the length of each half to put the right half on each side of the roof. The longest side goes on the roof's largest side



Assemble [Z], [R4] and [R5] as seen in the photo



The assemblage [Z] is positioned on the floor [Q] over the opening of the door. Center the assemblage to allow enough room for the tiles



Once assembled, you will notice there are still some parts of beams and tiles on boards. These are for you to customize your model.